

# Focus Hybrid



Light Efficiency:



Light Quality:



Color Temperature:



Output: 3555 lm

Peak: 222910 cd

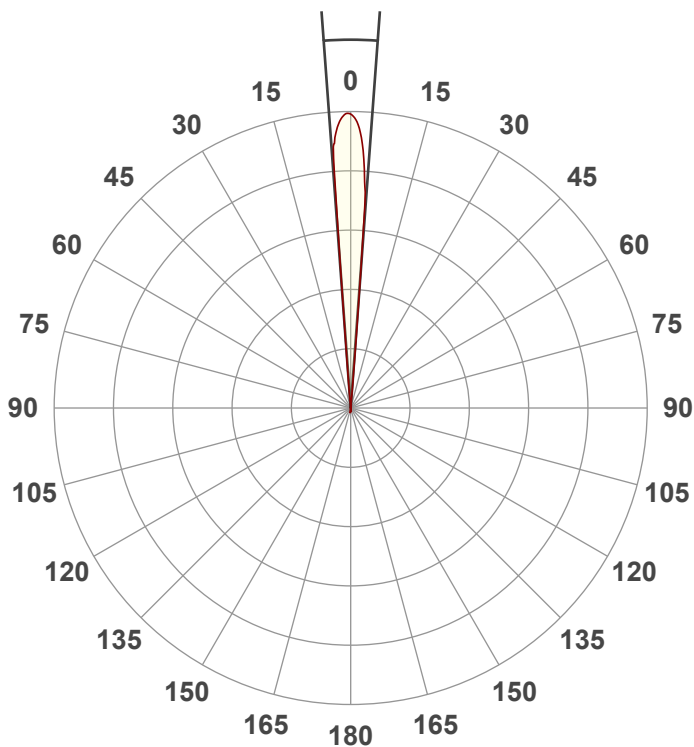
Power: 256.2 W

PF: 0.99



Beam Angle

8.4°



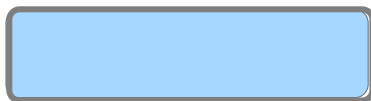
Test:

Zoom 50%

Date:

2/10/2023

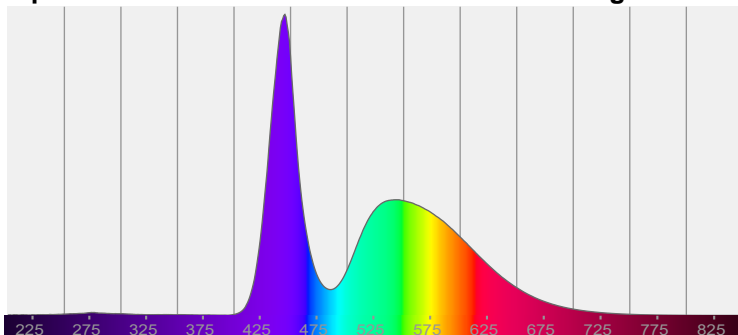
Note:



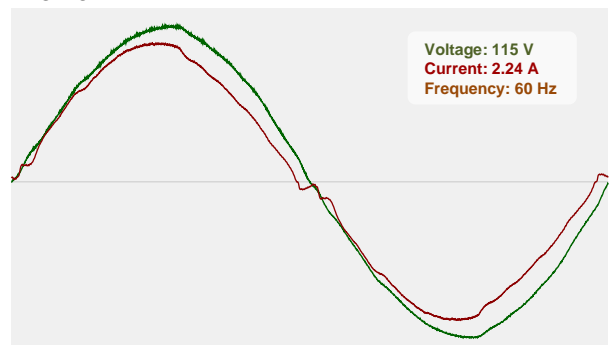
CIE 1931  
x: 0.281  
y: 0.280

Spectra

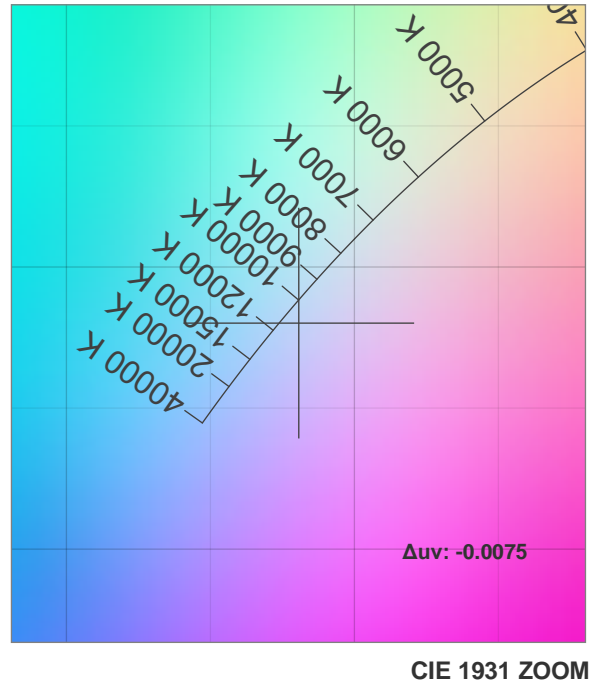
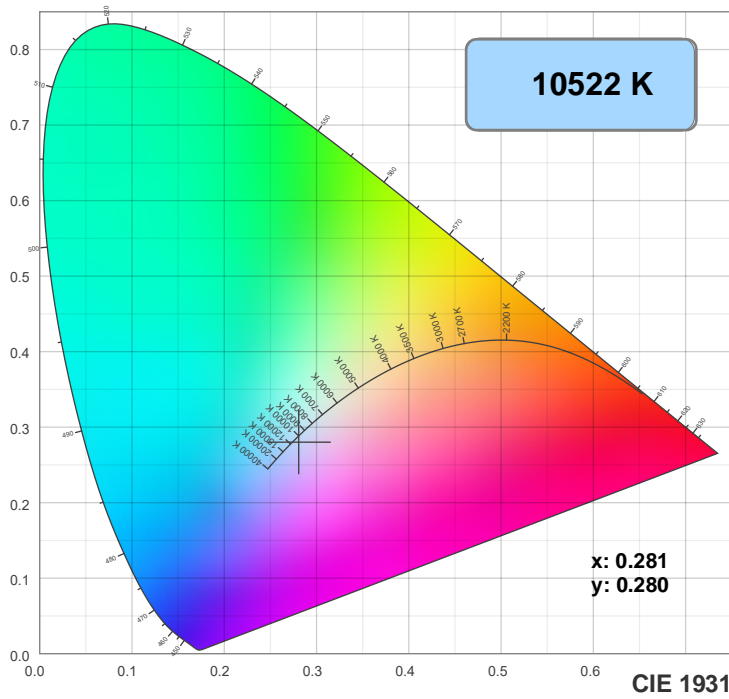
Dominant Wavelength: 468nm



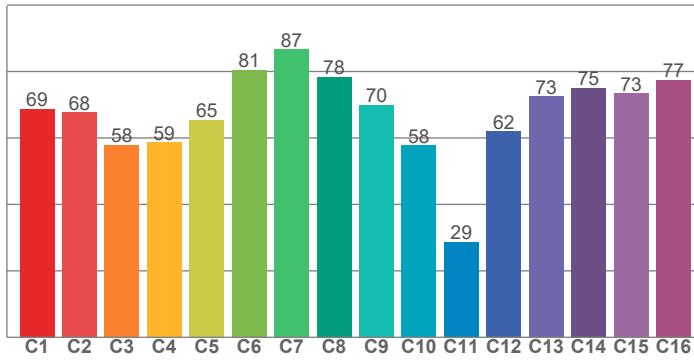
Power



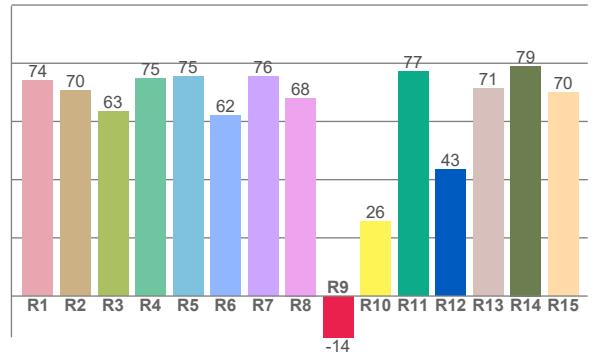
## Color Details



TM30: 67.6



CRI: 70.4 (R1-R8)



CRI R values, only R1-R8 are used to calculate final CRI value

R1	R2	R3	R4	R5	R6	R7	R8	R9	R10	R11	R12	R13	R14	R15
74.0	70.5	63.5	74.6	75.4	61.9	75.6	68.1	-14.2	25.6	77.0	43.5	71.2	79.1	70.1

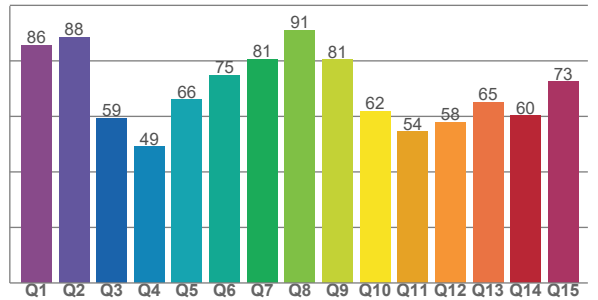
TM30 C values, 16 binned values out of total of 99 C values

C1	C2	C3	C4	C5	C6	C7	C8	C9	C10	C11	C12	C13	C14	C15	C16
68.7	67.7	57.9	58.7	65.4	80.5	86.6	78.4	69.9	57.8	28.7	62.0	72.5	75.0	73.4	77.5

CQS Q values

Q1	Q2	Q3	Q4	Q5	Q6	Q7	Q8	Q9	Q10	Q11	Q12	Q13	Q14	Q15
85.7	88.5	59.3	49.2	66.0	74.8	80.7	91.1	80.5	61.9	54.5	58.0	65.2	60.3	72.6

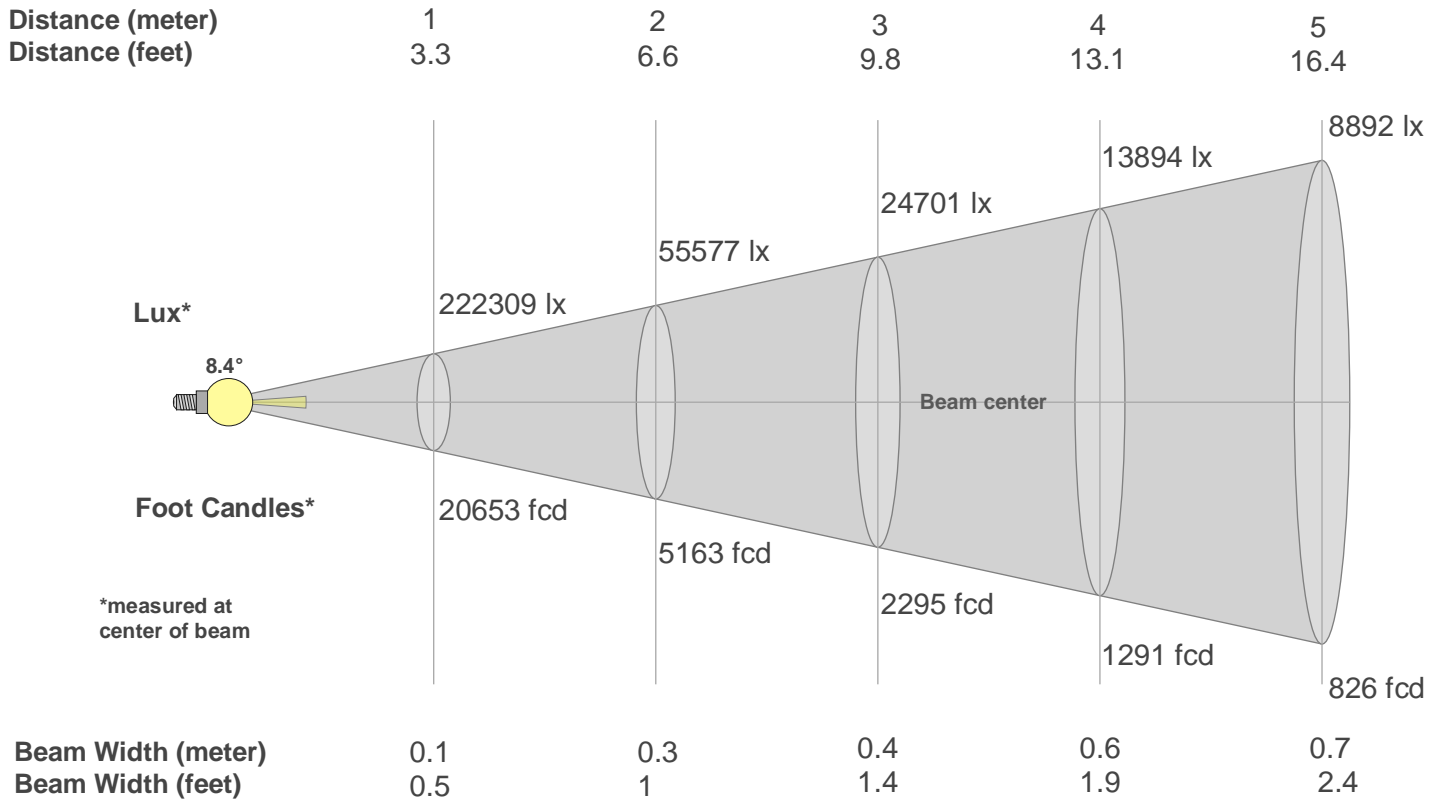
CQS: 67.3



## Color Parameters

Color Temperature	Color Rendering Index	Red Component	Color Fidelity	Color Gamut	Color Quality Scale	Color Coordinate CIE 1931	Color Coordinate CIE 1931	Color Coordinate	Color Coordinate	Color Deviation from Black Body
CCT	CRI	CRI R9	TM30 Rf	TM30 Rg	CQS	x	y	u	v	$\Delta uv$
10522 K	70.4	-14.2	67.6	95.4	67.3	0.281	0.280	0.194	0.290	-0.0075

## Beam Details



Beam Intensities from 1-20m

m	1	2	3	4	5	6	7	8	9	10	11	12	13	14	15	16	17	18	19	20
ft	3.3	6.6	9.8	13.1	16.4	19.7	23	26.2	29.5	32.8	36.1	39.4	42.7	45.9	49.2	52.5	55.8	59.1	62.3	65.6
lx	222309	55577	24701	13894	8892	6175	4537	3474	2745	2223	1837	1544	1315	1134	988	868	769	686	616	556
fcd	20653.2	5163.3	2294.8	1290.8	826.1	573.7	421.5	322.7	255	206.5	170.7	143.4	122.2	105.4	91.8	80.7	71.5	63.7	57.2	51.6

Intensities in 0° C-plane

0°	1°	2°	3°	4°	5°	6°	7°	8°	9°	10°	11°	12°	13°	14°	15°	16°	17°	18°	19°
222K	223K	218K	209K	170K	0K	0K	0K	0K	0K	0K	0K	0K	0K	0K	0K	0K	0K	0K	0K
100%	100%	98%	94%	76%	0%	0%	0%	0%	0%	0%	0%	0%	0%	0%	0%	0%	0%	0%	0%

Intensities in 90° C-plane

0°	1°	2°	3°	4°	5°	6°	7°	8°	9°	10°	11°	12°	13°	14°	15°	16°	17°	18°	19°
222K	223K	218K	209K	170K	0K	0K	0K	0K	0K	0K	0K	0K	0K	0K	0K	0K	0K	0K	0K
100%	100%	98%	94%	76%	0%	0%	0%	0%	0%	0%	0%	0%	0%	0%	0%	0%	0%	0%	0%

Intensities in 180° C-plane

0°	1°	2°	3°	4°	5°	6°	7°	8°	9°	10°	11°	12°	13°	14°	15°	16°	17°	18°	19°
222K	218K	209K	189K	150K	2K	0K	0K	0K	0K	0K	0K	0K	0K	0K	0K	0K	0K	0K	0K
100%	98%	94%	85%	67%	1%	0%	0%	0%	0%	0%	0%	0%	0%	0%	0%	0%	0%	0%	0%

Intensities in 270° C-plane

0°	1°	2°	3°	4°	5°	6°	7°	8°	9°	10°	11°	12°	13°	14°	15°	16°	17°	18°	19°
222K	218K	209K	189K	150K	2K	0K	0K	0K	0K	0K	0K	0K	0K	0K	0K	0K	0K	0K	0K
100%	98%	94%	85%	67%	1%	0%	0%	0%	0%	0%	0%	0%	0%	0%	0%	0%	0%	0%	0%

Beam Angle 50%	Field Angle 10%	Cutoff Angle 2,5%	Intensity Ratio in 120° Cone	Intensity Ratio in 90° Cone
8.4°	9.5°	9.9°	100.0%	100.0%